

## What's Blooming—June 2020



**Sweet Begonia**  
*Begonia odorata*



**Adam's Apple Flower**  
*Tabernaemontana crassa*



**Needle Flower**  
*Augusta rivalis*



**Mussaenda**  
*Mussaenda spp.*



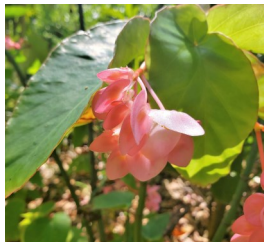
**Crape Jasmine**  
*Tabernaemontana divaricata*



**Pinwheel Jasmine**  
*Tabernaemontana divaricata*



**Queen's Wreath**  
*Petrea volubilis*



**Dragon Wing Begonia**  
*Begonia 'Dragon Wing'*

The plants pictured above can be found around Edison's study and Mina's moonlight garden. Look out for the two varieties of *Mussaenda* by either entrance to this small formal garden.

## What's Blooming—June 2020



Allamanda is a genus of flowering plants in the family *Apocynaceae*. These plants contain white latex, which Thomas Edison experimented with in a bid to produce a domestic source of natural rubber. Most varieties have yellow flowers. The 'cherries jubilee' cultivar (above) along orchid lane has pink flowers.



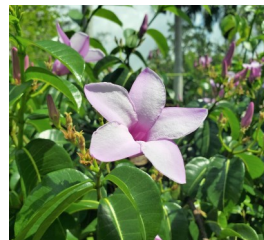
Left to right: *Allamanda cathartica* 'compacta,' *Allamanda cathartica*, and *Allamanda schottii*



**Bougainvillea**  
*Bougainvillea spp.*



**Lychee**  
*Litchi chinensis*

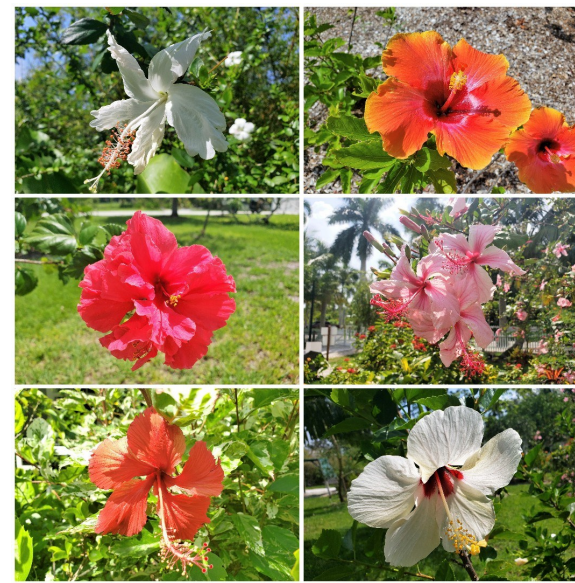


**Rubber Vine**  
*Cryptostegia madagascariensis*

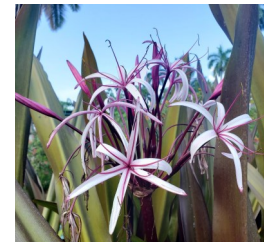


**Yellow Ixora**  
*Ixora coccinea*

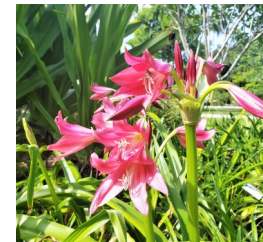
## What's Blooming—June 2020



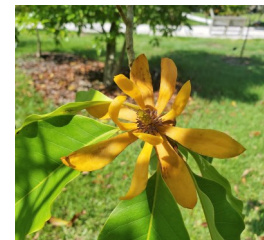
Hibiscus have large, solitary flowers that come in many colors. They usually have five petals, and can be identified by their conspicuous stamens—the male part of the flower. We planted a row of these tropical beauties along the main allée near the security station. The plants below are growing between there and the Edison Caretaker's House.



**Sacred Burmese Lily**  
*Crinum procerum*



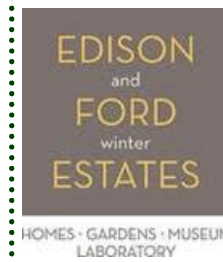
**Orange River Crinum**  
*Crinum bulbispermum*



**Golden Champaca**  
*Michelia champaca*



**Bridal Bouquet**  
*Plumeria pudica*



# What's Blooming

June  
2020



2350 McGregor Boulevard · Fort Myers, FL 33901  
(239) 334-7419 · [edisonfordwinterestates.org](http://edisonfordwinterestates.org)  
Copyright © 2010-2015 Edison & Ford Winter Estates



What's Blooming—June 2020



June is officially the month of the *Apocynaceae* as frangipani (*Plumeria spp.*), another member of this latex-bearing family, comes into full flush. These wonderfully scented flowers make the best Hawaiian leis, and they have been bred into an array of fantastic cultivars. We are lucky enough to be hosting a collection of rare frangipani which are located across from the Banyan Refreshment Area on the map.



What's Blooming—June 2020



Golden Shower tree (*Cassia fistula*), (above) and Royal Poinciana (*Delonix regia*), (below) are two of the most spectacular flowering trees of early summer. We have several of each on the grounds. Look out for them and the flowering trees pictured below this month.



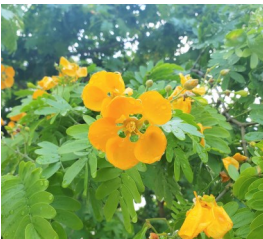
Queen's Crape Myrtle  
*Lagerstroemia speciosa*



Crape Myrtle  
*Lagerstroemia indica*



Magnolia 'Little Gem'  
*Magnolia grandiflora*



Vera Wood  
*Bulnesia arborea*

What's Blooming—June 2020



Oleander  
*Nerium oleander*



Rangoon Creeper  
*Quisqualis indica*



Pentas  
*Pentas lanceolata*



Firebush  
*Hamelia patens*



Here are just a few of the many orchids in bloom at The Estates in June. If you're hunting for them, be sure to look all around the trunks of the trees, as many are attached directly to the bark just like Mina used to do along Orchid Lane. The plants at the top are examples of what's blooming on the Ford property.

What's Blooming—June 2020



June marks the beginning of Mango season in Southwest Florida. We're all excited as many of our favorite trees have now made a full recovery from Hurricane Irma, which struck in 2017. The plants pictured below are blooming around the Garden Shoppe and the nursery.



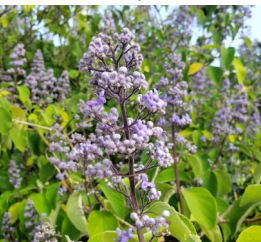
Blue Pea Vine  
*Clitoria ternatea*



Blanket Flower  
*Gaillardia pulchella*



Chinese Hat Plant  
*Holmskioldia tetensis*



Tropical Lilac  
*Cornutia grandifolia*



Glow Vine  
*Saritaea magnifica*



Strawberry Tree  
*Muntingia calabura*